

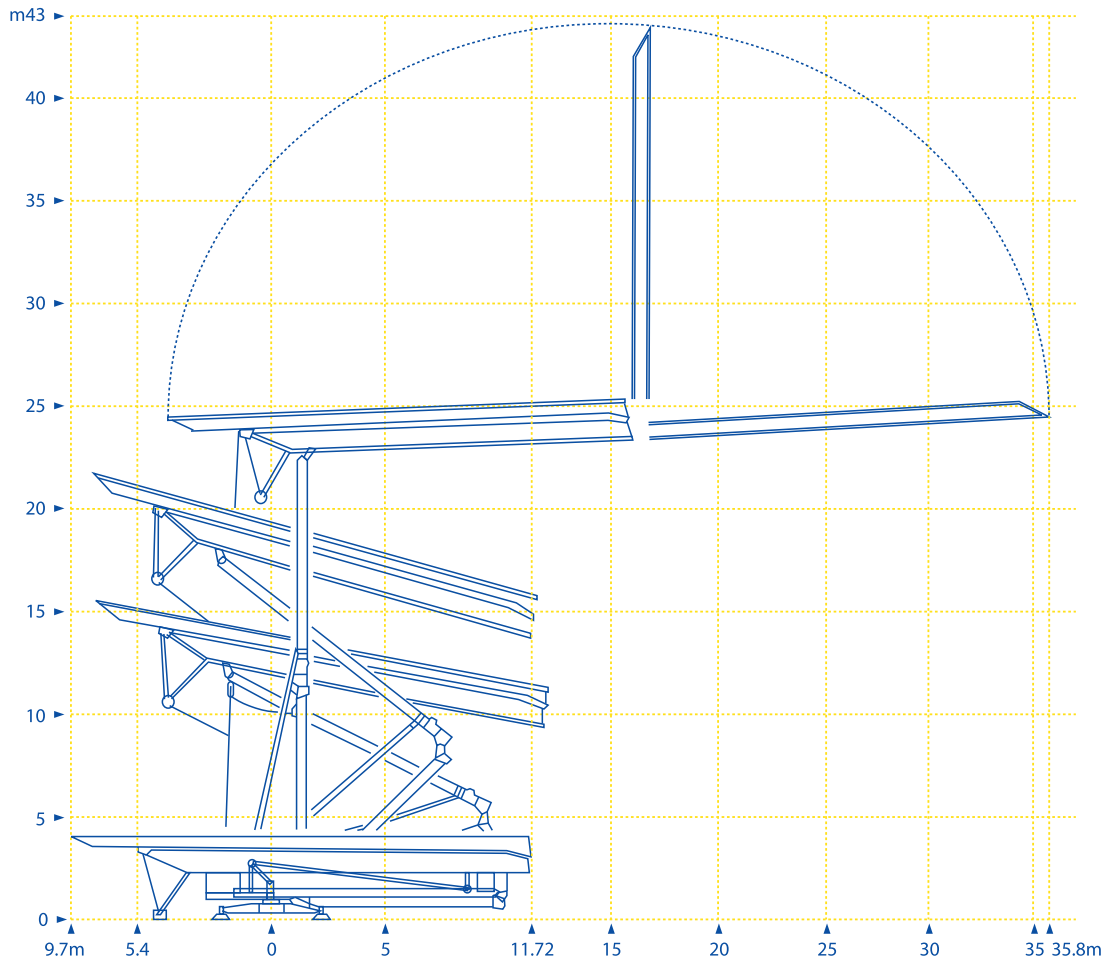
Load Curves

| Jib Length | 4 fall rope operation | | | | | | | | | | | m | |
|---|---|---------------|------|------|------|-------|-------|------|-------|------|------|------|----|
| | 14,08 | 16 | 18 | 20 | 22 | 24,03 | 26 | 28 | 30 | 32 | 34 | | 35 |
| 35m | 4000 | 3290 | 2835 | 2425 | 2150 | 2000 | 1840 | 1674 | 1533 | 1411 | 1300 | 1200 | Kg |
| Full 35m jib folded out | | | | | | | | | | | | | |
| Jib Length | 4 fall rope operation | | | | | | | | | | m | | |
| | 14,36 | 16 | 18 | 20 | 22 | 24,54 | 26 | 28 | 30 | 32 | | | |
| 32m | 4000 | 3588 | 3082 | 2698 | 2391 | 2000 | 1890 | 1720 | 1575 | 1400 | Kg | | |
| 3m jib section removed reducing maximum jib length to 32m | | | | | | | | | | | | | |
| Jib Length | 4 fall rope operation | | | | | | | | | m | | | |
| | 14,88 | 16 | 18 | 20 | 22 | 24 | 25,52 | 26 | 28,70 | | | | |
| 28.7m | 4000 | 3752 | 3230 | 2898 | 2508 | 2249 | 2000 | 1985 | 1750 | Kg | | | |
| 6.3m jib section removed reducing maximum jib length to 28.7m | | | | | | | | | | | | | |
| Jib Length | 4 fall or 2 fall rope operation | | | | | | | | | | m | | |
| | 14,7 | 4000Kg - Max. | | | | | | | | | | | |
| 14.7m | 20.3m jib section hydraulically folded back to reduce jib length to 14.7m | | | | | | | | | | | | |

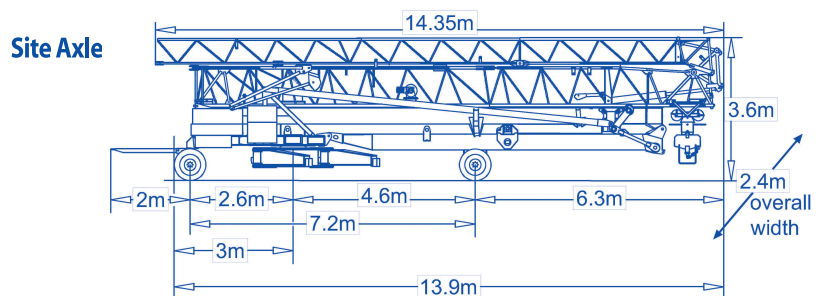
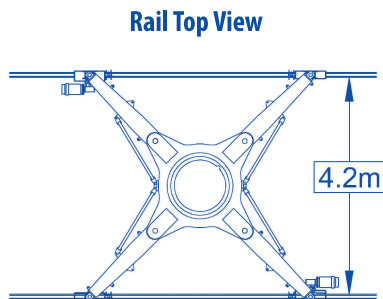
4 fall rope operation

4 fall or 2 fall rope operation

Erection Schematic



Mode of Transport



Rail Travel

| | |
|--------------|--------------------------------|
| Power | 2 No. x 2.5HP / 1.84Kw |
| Speed | 10/15 Metres per minute |

Weights

| | |
|---|------------------|
| Dead Weight without Transport Axles & Permanent Ballast | 14,500 Kg |
| Dead weight with transport axles & 2x 950kgs + 1x 3,400kgs Permanent Ballast | 20,500 Kg |

| BALLAST WEIGHTS | |
|-------------------------------------|-----------------|
| 14 No. @ 1,620 Kg | 22,680kg |
| 1 No. @ 3,400 Kg - Permanent | 3,400kg |
| 2 No. @ 950 Kg - Permanent | 1900kg |
| Total | 27,980kg |

The technical information contained in this document is useful as a basic introduction to the crane. In no case may this document serve as a substitute for the various manuals bearing the machine number of the crane.